

Forestry Trailer 7 tonnes



Forestry trailer 7 tonnes, centre frame, bogie wheels, hydraulic support legs, pivoted supports, tow ring for tractor



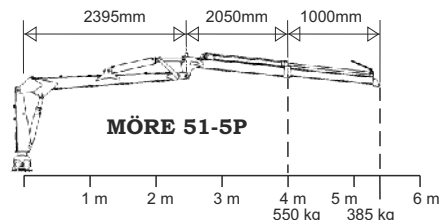
Nimble manoeuvring

Clear decals for simple handling of all functions.



Powerful articulated steering

increases passability and provides the crane longer range.



Technical data bogie	SF-7
Art. no.	04277
Load capacity tonnes	7
Width total, mm	1800
Length total, mm	5100
Bunk area, m ²	1,44
Inner length, mm	3230
Supports	4
Tow ring	yes
Articulated steering	yes
Axle, mm	60x60
Wheelbase, mm	1500
Clearance, mm	460
Wheel equipment std	11,5/80x15,3
Weight, kg	900
Crane mount	Trailer

Technical data crane	51-5P
Art. no.	04354
Reach, m	5,4
Lifting capacity, kg, at 4 m	550
Lifting capacity, kg, at full	385
Reach	
Extender	yes
Wide angle	yes
Slewing cylinders std	2
Valve block std.	CRV608-2 levers
Rec. pump cap, l/min	30-50
Working pressure, bar	180
Turning angle, crane	370
Slewing, rotator	unlim.
Grapple area m ²	0,14
Weight, kg	630

Complete forestry trailer	Art.no
SF-7/51-5P 5,4m	04334

Accessories SF-7	Art.no
Two-wheel brake Hydr.	04260
Four-wheel brake Hydr.	04219
Two-wheel brake Pneum.	04291
Four-wheel brake Pneum.	04218
Cross-beam with 2 extra supports	04111
Wheels 400x15.5 additional price	40020

Forestry Trailer 8 ton

SF8/6570



Nimble manoeuvring
clear decals for simple
handling of all functions.

8-tonnes forestry trailer, centre frame, articulated steering, adjustable bogie, hydraulic support legs, pivoted supports, tow ring



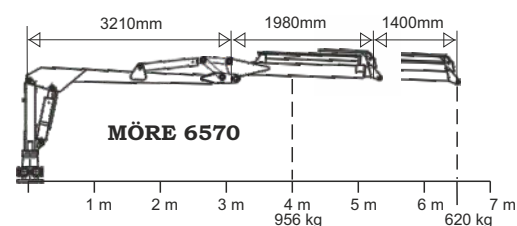
Articulated steering

with 2 cylinders provides greater mobility and longer crane reach.



Sturdy frame design

with adjustable bunks equipped with lock function.



Technical data bogie

	SF-8
Art.No	04034
Load capacity tonnes	8
Width total, mm	1920
Length total, mm	6150
Bunk area, m ²	1,85
Inner length, mm	4230
Supports	4
Tow ring	yes
Articulated steering	yes, 2-cyl
Axle, mm	70x70
Wheelbase, mm	1630
Clearance, mm	570
Wheel equipment std	11,5/80x15,4
Weight, kg	950
Crane mount	three-point

Technical data crane

	6570
Art no	04320
Reach, m	6,5
Lifting capacity, kg, at 4 m	956
Lifting capacity, kg, at full	620
Reach	
Extender	yes
Wide angle	yes
Slewing cylinders std	4
Valve block std.	CRV608-2 levers
Rec. pump cap, l/min	30-50
Working pressure, bar	180
Turning angle, crane	370
Slewing, rotator	unlim.
Grapple area m ²	0,18
Weight, kg	920

Complete forestry trailer

	Art.no
SF-8/6570 with extender 6,5m	04403

Accessories SF-8

	Art.no
Two-wheel brake Hydr.	04260
Four-wheel brake Hydr.	04219
Two-wheel brake Pneum.	04291
Four-wheel brake Pneum.	04218
Cross-beam with 2 extra supports	04111
Wheels 400x15,5 Additional price	40020
Crane winch Medle 1200kg Radio-contr.	04021

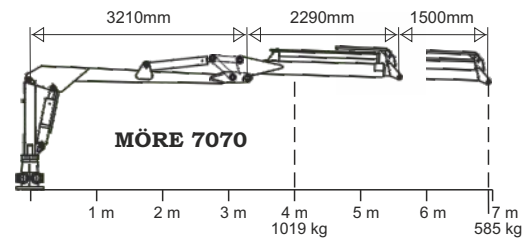
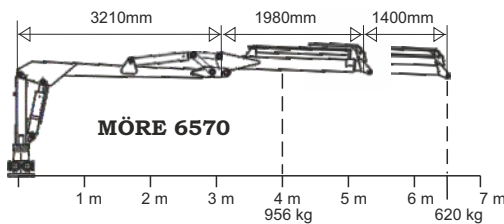
Forestry Trailer 9 tonnes



SF9/7070



Forestry trailer 9 tonnes, sturdy double frame, articulated steering, long bunk area, bogie, telescopic support legs, quick-coupled crane, 2-lever valve block, 400x15.5/14



Complete forestry trailer	Art.no
SF-9/6570 6,5m Art.no 04321	04321
SF-9/7070 7,0m Art.no 04347	04347

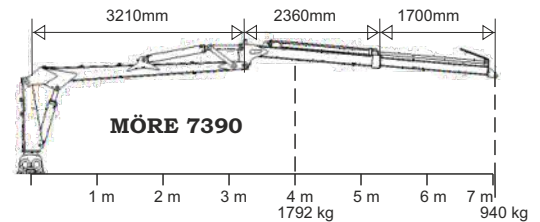
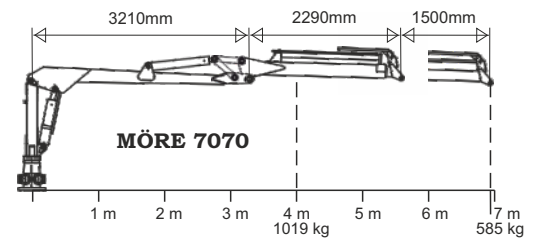
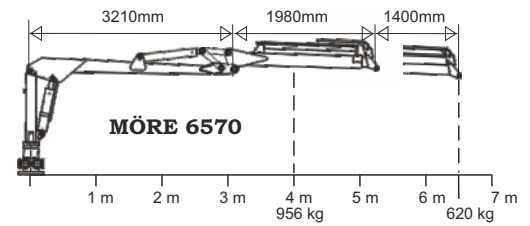
Technical data bogie	SF-9
Art.No	04014
Load capacity tonnes	9
Width total, mm	2200
Length total, mm	5150
Bunk area, m ²	2,06
Inner length, mm	3450
Supports	6
Tow ring	yes
Articulated steering	yes, 2-cyl
Axle, mm	70x70
Wheelbase, mm	1760
Clearance, mm	570
Wheel equipment std	400x15,5/14
Weight, kg	1500
Crane mount	three point

Technical data crane	6570	7070
Art.No	04320	04339
Reach, m	6,5	7,0
Lifting capacity, kg, at 4 m	956	1019
Lifting capacity, kg, at full	620	585
Reach		
Extender	yes	yes
Wide angle	yes	yes
Slewing cylinders std	4	4
Valve block std.	CRV608-2 levers	CRV608-2 levers
Rec. pump cap, l/min	30-50	30-50
Working pressure, bar	180	180
Turning angle, crane	370	370
Slewing, rotator	unlim.	unlim.
Grapple area m2	0,18	0,22
Weight, kg	920	980

Accessories trailer (additional price)	Art.no
Two-wheel brake Hydr.	04029
Four-wheel brake Hydr.	04030
Four-wheel brake Pneum.	04025
2 extra supports	04027
Welding socket for extra support	04028
Wheels 500x17	40045
Wheels 500x17 Traction	40119

Accessories crane (additional price)	Art.no
Valve with electric On-Off	04091
Valve, lightweight w. electric On-Off	04231
Valve, hydr. pre-control & 2 joysticks	04084
Valve with fully-electric joystick	04197
Valve, radio control	04338
Crane winch Medle 1200kg Radio-contr.	04021

Forestry Trailer 11 tonnes



Forestry trailer 11 tonnes, designed for large cranes, double frame, articulated steering, bogie, telescopic support legs, quick-coupled crane, 2-lever valve block, 400x/60x15,5 14PR

Complete forestry trailer	Art.no
SF-11/6570 6,5m	04335
SF-11/7070 7,0m	04341
SF-11/7390 7,3m	04348

Technical data bogie	SF-11
Art.No	04017
Load capacity tonnes	11
Width total, mm	2200
Length total, mm	5500
Bunk area, m ²	2,3
Inner length, mm	3810
Supports	6
Tow ring	yes
Articulated steering	yes, 2-cyl
Axle, mm	70x70
Wheelbase, mm	1760
Clearance, mm	570
Wheel equipment std	400x15,5/14
Weight, kg	1600
Crane mount	three point

Technical data crane	6570	7070	7390
Art.No	04320	04339	04345
Reach, m	6,5	7,0	7,3
Lifting cap. kg, at 4 m	956	1019	1792
Lifting cap. kg, at full	620	585	940
Reach			
Extender	yes	yes	yes
Wide angle	yes	yes	yes
Slewing cylinders std	4	4	4
Valve block std.	CRV608-2 levers	CRV608-2 levers	CRV608-2 levers
Rec. pump cap, l/min	30-50	30-50	30-50
Working pressure, bar	180	180	180
Turning angle, crane	370	370	370
Slewing, rotator	unlim.	unlim.	unlim.
Grapple area m2	0,18	0,22	0,25
Weight, kg	920	980	1540

Accessories trailer (additional price)	Art.no
Two-wheel brake Hydr.	04029
Four-wheel brake Hydr.	04030
Four-wheel brake Pneum.	04025
2 extra supports	04027
Welding socket for extra support	04028
Wheels 500x17	40045
Wheels 500x17 Traction	40119

Accessories crane (additional price)	Art.no
Valve with electric On-Off	Art.no 04091 04091
Valve, lightweight w. electric On-Off	Art.no 04231 04231
Valve, hydr. pre-control & 2 joysticks	Art.no 04084 04084
Valve with fully-electric joystick	Art.no 04197 04197
Valve, radio control	Art.no 04338 04338
Crane winch Medle 1200kg Radio-contr.	04021

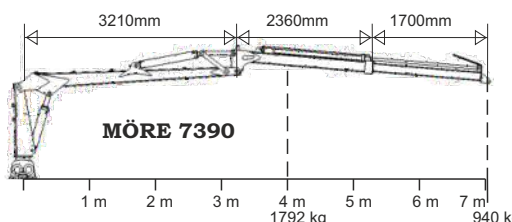
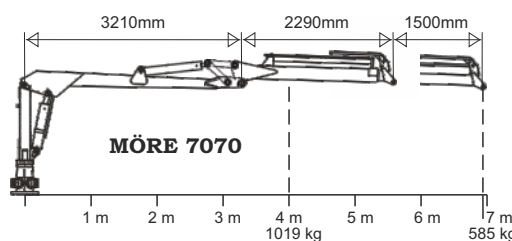
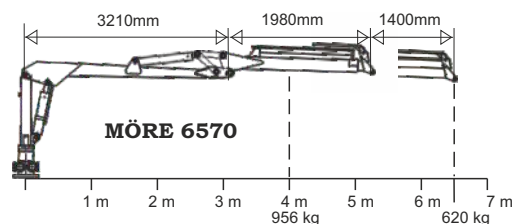
Forestry Trailer 12 tonnes

SF12/7070



These trailers are well equipped as standard: central lubrication, quick-coupled crane, hydraulic support legs, full-circle slewing rotator, grapple claw with symmetric movement pattern. Accessories: different control levers, winch, hydraulic 4-wheel drive.

Forestry trailer 12 tonnes, designed for large cranes, double frame, articulated steering, long bunk area, bogie, telescopic support legs, quick-coupled crane, 2-lever valve block, 500/50x17 18PR



Complete forestry trailer

SF-12/6570	6,5m	Art.no 04349
SF-12/7070	7,0m	Art.no 04350
SF-12/7390	7,3m	Art.no 04351

Art.no

04349
04350
04351

Technical data bogie

	SF-12
Art.No	04037
Load capacity tonnes	12
Width total, mm	2410
Length total, mm	6260
Bunk area, m ²	2,8
Inner length, mm	4470
Supports	8
Tow ring	yes
Articulated steering	yes, 2-cyl
Axle, mm	80x80
Wheelbase, mm	1960
Clearance, mm	590
Wheel equipment std	500/50x17 18PR
Weight, kg	1900
Crane mount	three point

Technical data crane

	6570	7070	7390
Art.No	04320	04339	04345
Reach, m	6,5	7,0	7,3
Lifting capacity, kg, at 4 m	956	1019	1792
Lifting capacity, kg, at full	620	585	940
Reach			
Extender	yes	yes	yes
Wide angle	yes	yes	yes
Slewing cylinders std	4	4	4
Valve block std.	CRV608-2 lev.	CRV608-2 lev.	CRV608-2 lev.
Rec. pump cap, l/min	30-50	30-50	30-50
Working pressure, bar	180	180	180
Turning angle, crane	370	370	370
Slewing, rotator	unlim.	unlim.	unlim.
Grapple area m ²	0,18	0,22	0,25
Weight, kg	920	980	1540

Accessories trailer (additional price)

	Art.no
Hydr. 4WD incl 500/55x17	04039
Two-wheel brake Hydr.	04049
Four-wheel brake Hydr.	04050
Four-wheel brake Pneum.	04083
2 extra support	04027
Welding socket for extra support	04028
Wheels 500x17 Traction	40119

Accessories crane (additional price)

	Art.no
Valve with electric On-Off	04091
Valve, lightweight w. electric On-Off	04231
Valve, hydr. pre-control & 2 joysticks	04084
Valve with fully-electric joystick	04197
Valve, radio control	04338
Crane winch Medle 1200kg Radio-contr.	04021

Forestry Trailer 14 tonnes



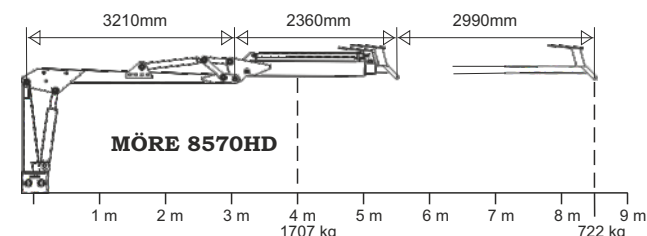
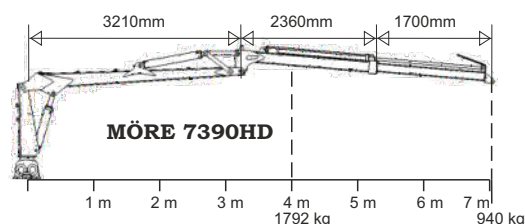
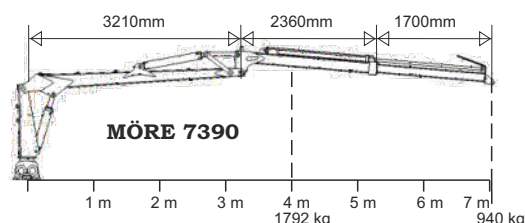
SF14/8570

Professional series for forestry companies as well as independent foresters. These trailers are used in several European countries in three work shifts in difficult terrain. In a short space of time, this has provided us with experience that has been incorporated in the new generation of professional trailers.

Improved mobility, increased load capacity, refined movement patterns & increased lifting capacity.

The sturdy double frame has a low build height & the tow coupling centre line is located far back. Articulated steering with two dual-acting cylinders, which provides the trailer with exceptional tracking, stability and reach. The frame has pivoted supports, which prevent damage to standing trees. At the front is a sturdy front gate and mounts for the crane and support legs.

Forestry trailer 14 tonnes, designed for large cranes, double frame, articulated steering, long bunk area, bogie, quick coupled crane, 2-lever valve block, 500x45x22.5



Complete forestry trailer	Art.no
SF-14/7390 7,3m	04352
SF-14/7390HD 7,3m	04353
SF-14/8570 8,51m	04343

Technical data bogie	SF-14
Art.No	04203
Load capacity tonnes	14
Width total, mm	2410
Length total, mm	6260
Bunk area, m ²	3,5
Inner length, mm	4570
Supports	8
Tow ring	yes
Articulated steering	yes, 2-cyl
Axle, mm	90x90
Wheelbase, mm	1960
Clearance, mm	590
Wheel equip. std	500/45x22,5
Weight, kg	2640
Crane mount	three point

Technical data crane	7390	7390HD	8570HD
Art.No	04345	04328	04329
Reach, m	7,3	7,3	8,51
Lifting capacity, kg, at 4 m	1792	1792	1707
Lifting capacity, kg, at full Reach	940	940	722
Extender	yes	yes	yes
Wide angle	yes	yes	yes
Slewing cylinders std	4	4	4
Valve block std.	CRV608-2 levers	CRV808-2 levers	CRV808-2 levers
Rec. pump cap, l/min	30-50	30-50	30-50
Working pressure, bar	180	180	180
Turning angle, crane	370	370	370
Slewing, rotator	unlim.	unlim.	unlim.
Grapple area m2	0,25	0,28	0,28
Weight, kg	1540	1570	1650

Accessories trailer (additional price)	Art.no
Hydr. 4WD incl 550/45x22,5	04214
Four-wheel brake Hydr.	04229
Four-wheel brake Pneum.	04230
2 extra support	04027
Welding socket for extra support	04028

Accessories crane (additional price)	Art.no
Valve with electric On-Off	04091
Valve, lightweight w. electric On-Off	04231
Valve, hydr. pre-control & 2 joysticks	04084
Valve with fully-electric joystick	04197
Valve, radio control	04338
Crane winch Medle 1200kg Radio-contr.	04021

Bogie 7-8 tonnes, centre frame



The construction of the forest trailer is well balanced combination of agility and strength.

Sturdy frame design with adjustable bunks equipped with lock function.

Model	SF7	SF8
Art no	04277	04034
Load capacity, tonnes	7	8
Centre tube	X	X
Double frame		
Width total, mm	1800	1920
Length total, mm	5100	6150
Bunk area, m2	1,44	1,85
Inner length, mm	3230	4230
Supports	4	4
Tow ring	yes	yes
Articulated steering	no	yes, 1-cyl
Axle, mm	60x60	70x70
Wheelbase	1500	1630
Clearance, mm	460	570
Wheel equip. std	11,5/80x15,3	11,5/80x15,4
Weight, kg	900	950
Crane mount	trailer mount	three point



Hydraulic frame steering is standard on SF7 and SF8. SF7 has one cylinder and SF8 has two.

Accessories SF7 (additional price)	Art.no
Two-wheel brake Hydr.	04260
Four-wheel brake Hydr.	04219
Two-wheel brake Pneum.	04291
Four-wheel brake Pneum.	04218
Cross beam with 2 extra support	04111
Wheels 400x15,5	40020

Accessories SF8 (additional price)	Art.no
Two-wheel brake Hydr.	04260
Four-wheel brake Hydr.	04219
Two-wheel brake Pneum.	04291
Four-wheel brake Pneum.	04218
Cross beam with 2 extra support	04111
Wheels 400x15,5	40020



Sturdy frame construction with removable banks equipped with a locking function.

Bogie 9-14 ton, double frame



Möre Forestry Bogie, SF-9, 11, 12 & 14.

The chassis, with its low build height, is based on a rectangular frame that provides stability and maximum durability.

The frame has shaped and pivoted supports, which prevent damage to standing trees. At the front is a sturdy gate for a safe working environment. The crane is attached via a three-point mount. By loosening the pins, the crane can be removed from the forestry trailer and attached to, for example, the tractor's three-point hitch. The trailers are equipped with sturdy wheel equipment for good mobility.

Can be equipped with hydraulic/pneumatic brakes, lighting, tipper body and more.



German drawbar



Eylets for German drawbar



Accessories
Control platform Art.No 04398



Articulated steering with two cylinders.

The tow coupling centre line is located far back in the chassis.

This provides the trailer with exceptional steering and stability, as well as extra reach for the crane.

Schärmüller	Art.no
11026 40mm	04121
K80	04120

Model	SF9	SF11	SF12	SF14
Art no	04014	04017	04037	04203
Load capacity, tonnes	9	11	12	14
Centre tube				
Double frame	X	X	X	X
Width total, mm	2200	2200	2410	2410
Length total, mm	5150	5500	6260	6260
Bunk area, m2	2,06	2,3	2,8	3,5
Inner length, mm	3450	3810	4470	4570
Supports	6	6	8	8
Tow ring	yes	yes	yes	yes
Articul. steering	yes, 2-cyl	yes, 2-cyl	yes, 2-cyl	yes, 2-cyl
Axle, mm	70x70	70x70	80x80	90x90
Wheelbase	1760	1760	1960	1960
Clearance, mm	570	570	590	590
Wheel eq. std	400x15,5/14	400x15,5/14	500x17/18	500/45x22,5
Weight, kg	1500	1600	1900	2640
Crane mount	three point	three point	three point	three point

Accessories SF9 (additional price)	Art.No
Two-wheel brake Hydr.	04029
Four-wheel brake Hydr.	04030
Four-wheel brake Pneum.	04025
2 extra support	04027
Welding socket for extra support	04028
Wheels 500x17	40045
Wheels 500x17 Traction	40119

Accessories SF11 (additional price)	Art.No
Two-wheel brake Hydr.	04029
Four-wheel brake Hydr.	04030
Four-wheel brake Pneum.	04025
2 extra support	04027
Welding socket for extra support	04028
Wheels 500x17	40045
Wheels 500x17 Traction	40119

Accessories SF12 (additional price)	Art.No
Hydr. 4WD incl 500/55x17	04139
Two-wheel brake Hydr.	04049
Four-wheel brake Hydr.	04050
Four-wheel brake Pneum.	04083
2 extra support	04027
Welding socket for extra support	04028
Wheels 500x17 Traction	40119

Accessories SF14 (additional price)	Art.No
Hydr. 4WD incl 550/45x22,5	04214
Four-wheel brake Hydr.	04229
Four-wheel brake Pneum.	04230
2 extra support	04027
Welding socket for extra support	04028

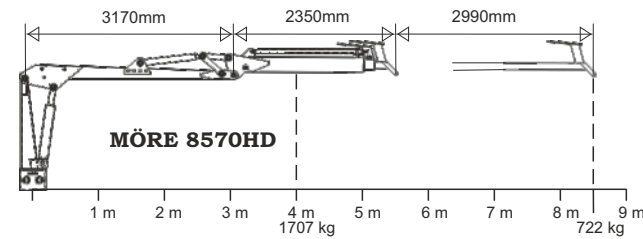
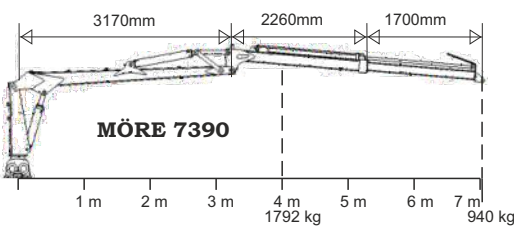
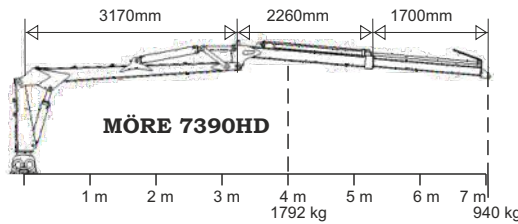
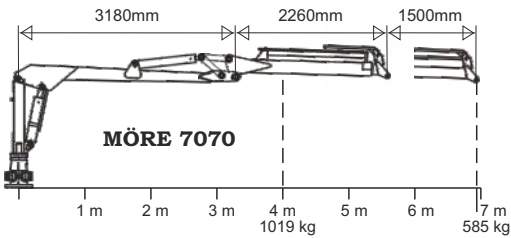
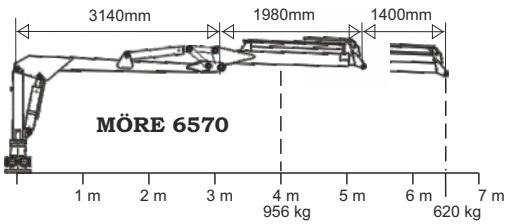
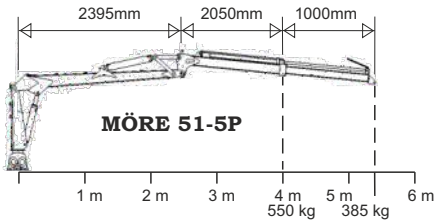


4-WD Hydraulic drive

The powerful drive rollers provide good mobility in difficult terrain and even with smaller tractors.

The drive rollers are easily activated from the cab.

Grapple Loaders



Accessories crane (additional price)	Art.No
Valve with electric on-off	04091
Valve, lightweight w. electric On-Off	04231
Valve, hydr. pre-control & 2 joysticks	04084
Valve with fully-electric joystick	04197
Crane winch Medle 1200kg	04113
Crane winch Medle 1200kg Radio-contr.	04121

The lifting capacity of the new Möre Grapple generation has been thoroughly tested and this has shown that the maximum lifting capacity has increased by as much as 30%! The tests were conducted at 4 m/full reach, using a rotator without a grapple claw attached.

The grapple claw weight varies depending on the customer's choice of size and as such is excluded.

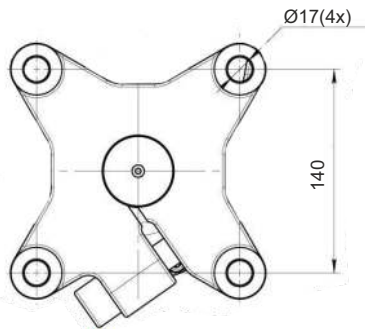
The Möre Grapple is equipped as standard with hydraulic telescopic support legs. The larger 7390HD and 8570 HD models are equipped with butterfly-type hydraulic support legs.

Model	51-5P	6570	7070	7390	7390HD	8570HD
Art.no.	04354	04320	04339	04345	04328	04329
Reach, m	5,4	6,5	7,0	7,3	7,3	8,51
Lifting capacity, kg, at 4 m	550	956	1019	1792	1792	1707
Lifting capacity, kg, at full reach	385	620	585	940	940	722
Extender	yes	yes	yes	yes	yes	yes
Wide angle	yes	yes	yes	yes	yes	yes
Slewing cylinders, std	2	4	4	4	4	4
Valve block, std	CRV608-2 lev.	CRV608-2 lev.	CRV608-2 lev.	CRV608-2 lev.	CRV808-2 lev.	CRV808-2 lev.
Rec. pump capacity, l/min	30-50	30-50	30-50	30-50	30-50	30-50
Working pressure, bar	180	180	180	180	180	180
Turning angle, crane	370	370	370	370	370	370
Slewing, rotator	unlim.	unlim.	unlim.	unlim.	unlim.	unlim.
Grapple area, m ²	0,14	0,18	0,22	0,25	0,28	0,28
Weight, kg	630	920	980	1540	1570	1650

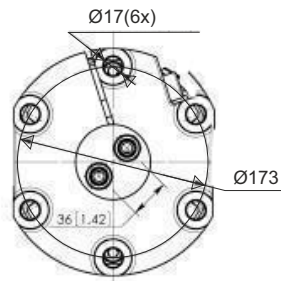
Möre Rotators



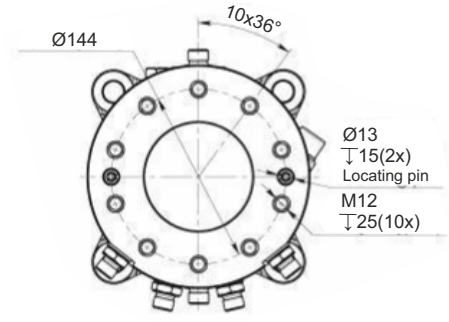
Rotator model	GR-10	GR-30	GR-30PF	GR-46	GR-465	GR-55M	GR-55MF	GR-55FF
Art. no.	04118	04215	04379	04216	04333	04238	04269	04380
Rotation	unrestr.	unrestr.	unrestr.	unrestr.	unrestr.	unrestr.	unrestr.	unrestr.
Max. axial load, kg	1000	3000	3000	4500	4500	5500	5500	4500
Rec. min. oil flow l/min	10	20	20	20	20	22	22	22
Max. working pressure, MPa	20	20	20	25	25	25	25	25
Weight, kg	10	18	20	23	23	29	36	35
Hose connection, R	1/4"	3/8"	3/8"	3/8"	3/8"	3/8"	3/8"	3/8"
Upper lock pin diam., mm	25	25	25	25	25	30	30	Flange
Lower mount diam., mm	39,5	49,5	Flange	59	Flange	69	Flange	Flange
Upper mount thickness, mm	45	60	60	73	73	73	73	-
Lower lock pin diam., mm	20	25	-	30	30	30	-	-



GR-30PF, GR-465 & GR-55FF(Lower)



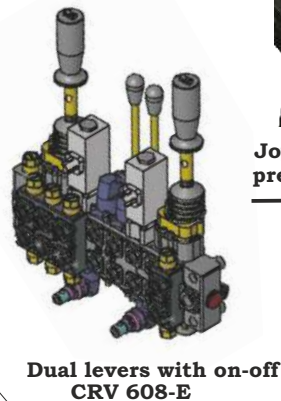
GR-55MF



GR-55FF(Upper)

Valve block

For the supplement when purchasing a complete grapple loader, see pages 12.



ERGO-DigiStick



Model	CRV 608	CRV 808	CRV 608-E	CRV 608-P	Maxi 3-0-3	BC/60-8	2xTR55/4
Art.no.	04045	04314	04091	04084	04338	04197	04231
Functions	8	8	8	8	8	8	8
Control type	2-levers coord.	2-levers coord.	2-levers on-off	Joystick	Radio control	Joystick	Joystick on-off
Valve block type	CRV 608	CRV 808	CRV 608	CRV 608	EX 38/8	BC/60-8	2xTR55/4
Free flow	60	80	60	60	60	60	50
Shock valves	5	8					

Timber Grapple



Möre Timber Grapple – More than 10,000 grapples sold!

This well proven grapple is available in 10 different sizes with custom mounts, as well as socket or bolt fasteners. The sturdy grapple claw is made of highly-durable Hardox steel and all joints are fitted with bushings and grease nipples to ensure high durability.

Möre Grapple model	MG 0,08	MG 0,14	MG 0,18	MG 0,22	MG 0,25	MG 0,28	MG 0,32	MG 0,45
Art.no.	04117	04007	04008	04009	04032	04157	04172	04270
Max. opening A , mm	720	990	1020	1150	1350	1410	1550	1870
Min. log diameter C , mm	60	80	90	95	120	120	110	200
Grapple area, m ²	0,08	0,14	0,18	0,22	0,25	0,28	0,32	0,45
Max. lifting capacity, kg	450	700	900	1200	1300	1800	2500	3000
Weight, kg	24	55	68	83	105	119	173	225
Open grapple height E , mm	510	620	690	700	770	775	820	1130
Closed grapple height D , mm	400	470	440	500	525	520	530	710
Connection to rotator, type	A1*	A2*	B1+B2*	B1+B2*	B1+B2*	B1+B3*	B1+B2*	B1+B2*
Length B , mm	465	640	675	730	785	790	885	1110
Width, mm	180	230	250	290	315	315	365	440
Oil pressure, kg	180	180	180	180	180	180	190	190

* See dimensional sketch of bracket next page.

Brushwood Grapple/Bucket



The Möre Grapple – now with brushwood grapple/bucket!

The brushwood grapple has been developed in collaboration with Swedish forestry contractors.

The brushwood grapple/bucket is based on the basic design of the renowned Möre Grapple.

Grapple/Bucket	CD 0,18	CD 0,22	CD 0,30	H 240
Art.no.	04168	04169	04176	06051
Max. opening A , mm	1050	1170	1500	970
Claws	4	4	7	
Grapple area, m ²	0,18	0,22	0,30	
Volume, L				240
Max. lifting capacity, kg	900	1200	1500	1500
Weight, kg	76	92	161	145
Open height E , mm	630	670	750	705
Closed height D , mm	450	500	480	700
Connect. rotator, type	B1+B2*	B1+B2*	B1+B3*	B1+B3*
Length, mm	680	745	880	1085
Width, mm	250	285	530	670
Oil pressure, kg	180	180	180	180

* See dimensional sketch of bracket next page.

SOCKETS
Flange bracket

S-MOUNT

Mount	H-50	H-60	H-70
Art.no.	04179	04180	04181
Upper bracket	A2*	A3*	A4*
Lower bracket	B1+B2*	B1+B2*	B1+B2*

Mount	S-30	S-40	S-45	S-50	S-60
Art.no.	04410	04332	04400	04401	04402
Upper bracket	S30	S40	S45	S50	S60
Lower bracket	B1+B2*	B1+B2*	B1+B2*	B1+B2*	B1+B2*

* See dimensional sketch of bracket next page.

Grapple HD

Möre Construction grapple HD!

New generation of Möre pro grapple!
Suitable for mounting on construction
and forestry cranes such as: truck
cranes, harvesters & forest trailers, etc.
Grip clone can be used to advantage on
excavators.

Attachment 140x140 and 173/6.



Möre timber grapple - HD

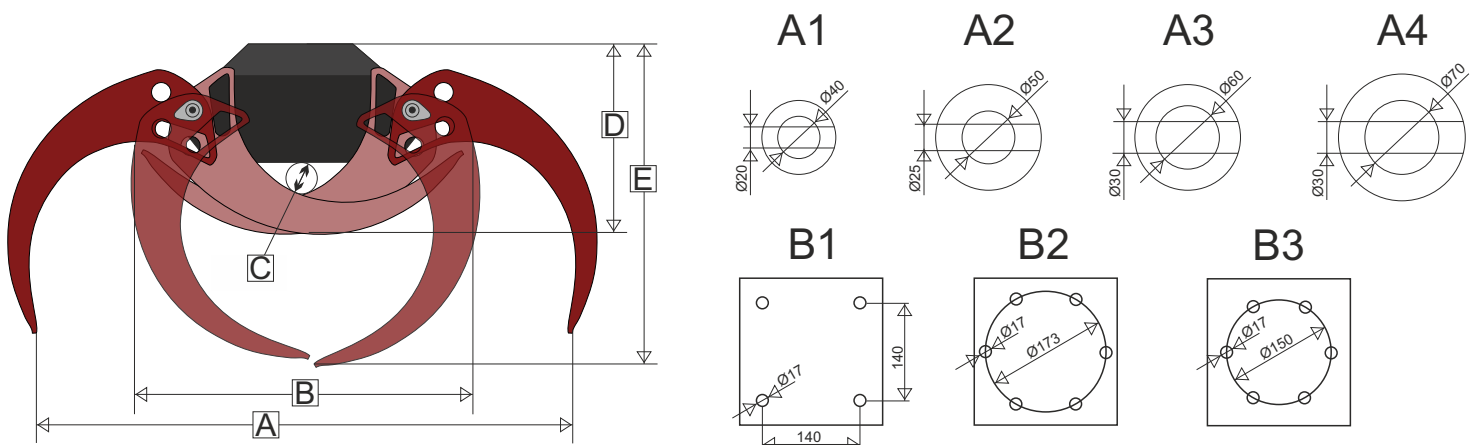
The sturdy grapple claw is made of highly-durable Hardox steel and all joints are fitted with bushings and grease nipples to ensure high durability. The symmetrical movement pattern makes work more efficient and safer.

Möre Grapple model	GR110	GR130	GR150
Art.No	04390	04392	04399
Max. opening A , mm	1140	1290	1490
Min. log diameter C , mm	40	40	50
Grapple area, m ²	0,21	0,23	0,25
Max. lifting capacity, kg	2100	3200	3500
Weight, kg	138	158	179
Open grapple height E , mm	815	880	935
Closed grapple height D , mm	520	560	630
Connection to rotator, type	B1+B2*	B1+B2*	B1+B2*
Length B , mm	805	875	960
Width, mm	380	380	380
Oil pressure, kg	220	220	220

* See dimensional sketch of bracket below.



Dimensional sketch of grapple and mounts



Complete wheels

Thanks to our large volume purchases, we can now offer transport wheels for agricultural, off-road and industrial use at extremely low prices. These wheels are fitted as standard to Möre Maskiner products and as such are well proven and quality assured. Supplied complete with tyres and rims.



Wheels	40101	40055	40020	40021	40045	40068	40119
Art.no.	40101	40055	40020	40021	40045	40068	40119
Size	22 x 11.00-8	11.5/80 x 15.3	400/60 x 15.5	400/60 x 15.5	500/50 x 17	500/50 x 17	500/50 x 17
Layers	4	10	14	14	18	18	14
Type	Tubeless	Tubeless	Tubeless	Tubeless	Inner tube	Tubeless	Inner tube
Pattern	ATV	Rib	Rib	Traction	Rib	Rib	Traction
Bolt holes	4	6	6	6	6	8	6

Wheel axles

Separate wheel axles and tow rings for repairs or rebuilds. Components from the Möre Maskiner forestry trailer range are of high quality and are well proven under tough conditions.



Wheel axles brakeless	70x70	80x80	90x90
Art.no.	04042	04047	04213
Wheel axles braked	70x70	80x80	90x90
Art.no.	04046	03041	04141

Tow rings



Accessories	Art.nr
Drawbar extension 300mm	03119
K80 for 80mm ball	04120
Scharmüller 40mm ring	04121
Tow ring weldable	04232
Tow ring bolted	04233

Winch



Medle winch - High-quality, Swedish made hydraulic winch for mounting on the cranes lifting arm. 6-mm thick cable with 121 threads & 35 metres in length. Traction force 1200 kg, weight 45 kg. Radio or manual control. Optional three-way valve with extra hose kit.

Medle winch	Art.nr
Manual controlled winch	04013
Radio-controlled winch	04021

Three-point support



Hydraulic support legs with three-point mount and universal mounting plate to fit most cranes. Supplied with hydraulic pistons and support feet.

Three-point support	Art.nr
with hydraulic telescopic support legs	04010
with hydraulically retractable support legs (butterfly)	04236



Separate closed hydraulic system with pump and tank. Hydraulic pump up to 55 l / min 250 bar. The tank is equipped with a custom filter and Sieve glass for oil level. The pump is easily mounted on the tractor PTO shaft and locks with quick coupling. The pump provides high oil flow already at economical speeds on the tractor. The idea is designed to take care of forestry, but can also be used on other machines.

Hydraulic unit with separate pump for PTO connection
Art.no. 04127. Separate tank with filter and pump with gearbox.



Folding tail light board

Art.no. 04108



Welding socket for S-support

Art.no. 04028



Grain bed

Tipper bed for timber trailer SF-11

Tipping cylinder and trailer body from Möre Trailer T-100 (10 tonnes). Easy installation: remove S-supports, lower bed onto frame and fasten. The bed is sold separately.



Dumper bed

Grain bed for SF 11

Art.no. 03033. Supplied with tipping cylinder. Split side panels. Load capacity 10 tonnes, incl. parking support.

Dumper bed for till SF 11

Art.no. 03037. Supplied with tipping cylinder. Load capacity 10 tonnes, incl. parking support.

Wood splitter

Möre splitting cone with hydraulic motor for dividing large logs and stumps. For mounting on ex. excavators up to 8ton. Is equipped with threaded bolt mounting for mounting bracket for ex. different excavators. The splitter is designed to work into the material without excessive pressure. Delivered without hoses, couplings and bracket.

Wood splitter with hydraulic motor 500 Art.no 04283
1440Nm at 210bar. Min flow 30 l/m,
Weight 107 kg, Cone ø 200 mm, connection 3/4"
Wood splitter with hydraulic motor 1000 Art.no 04377
2015Nm at 210bar. Min flow 60 l/m,
Weight 150 kg, Cone ø 250 mm, connection 1"



Möre Wood Splitter for splitting large logs and stumps. The splitting cone is equipped with a flange bracket and can be used with sockets (see below) for use on larger model rotators. The splitter is designed to work its way into the material without excess force. The hardened tip is easily replaceable.

Möre stump cutter for mounting on Möre hydraulic motor. The hardened threaded tip helps to push the hardened cutting steel to the stub. The cutting steel can be rotated steplessly to obtain a sharp cutting surface. This means that the cutting tool can be utilized up to 10 times longer before cutting-edge change.



Accessories

	Art.no
Splitter cone, ø200mm, flange	04368
Stump cutter, ø300mm, flange	04319
Replacement tip splitting cone/stump cutter	
Replacement steel stump cutter	



SOCKETS

Flange bracket for splitting cone and stump cutter.

Socket	50	60	70
Art.no	04177	04178	04378
Upper bracket, mm	50	60	70

S-MOUNTS

For Möre hydraulic motor



Mount	S-30	S-40	S-45	S-50	S-60
Art.no	04410	04332	04400	04401	04402
Upper bracket	S30	S40	S45	S50	S60

Möre Grapple Arm

For mounting on front loader or three-point

Möre Grapple Arm The perfect tool for log skidding, bulk bag handling, log splitting and log handling, feeding wood processors and more. The toothed surface under the frame helps keep the log in place during handling. The grapple arm is equipped as standard with Euro or SMS mount for front loaders and a three-point mount for the hydraulic arms on a tractor.

Cmpl grapple arm with rotator & grapple 0.22
Rotator: 3000 kg, Grapple: MG-0,22
Art.no Euro mount: 04286 SMS mount: 04428

Cmpl grapple arm with rotator & grapple 0.32
Rotator: 4500 kg, Grapple: MG-0,32
Art.no Euro mount: 04285 SMS mount: 04429

